

# Highlighted Projects

---

## Homeworks Cairo festival

---

Change the exterior facade of the entire building into a pattern that consists of Red and Gray panels



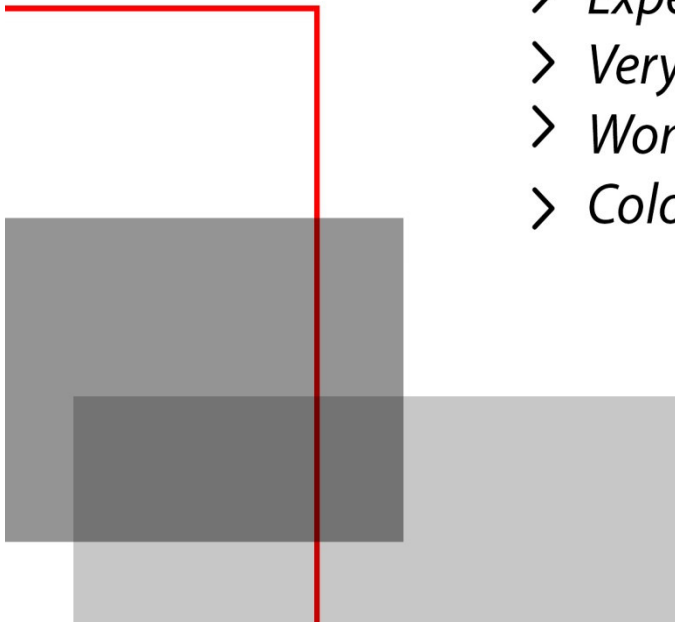
# Highlighted Projects

## *Original plan*

*Change the whole composite panels with its entire steel structure*

*Composite panels dont have the flexibility of making the needed pattern.*

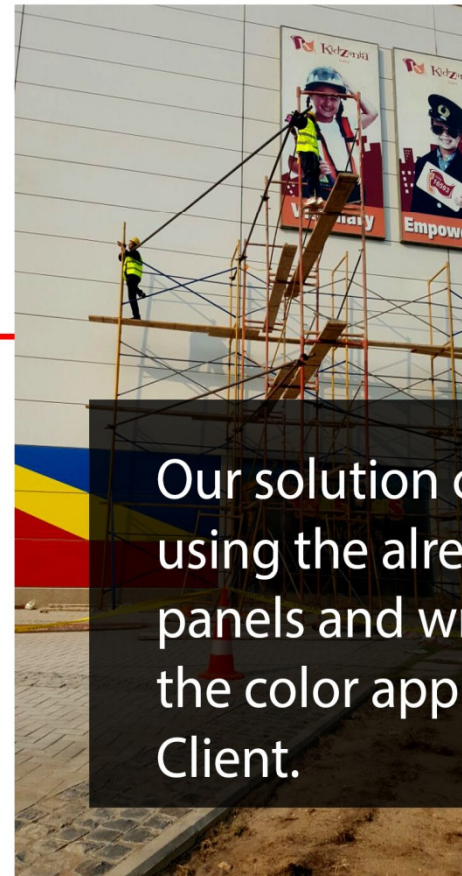
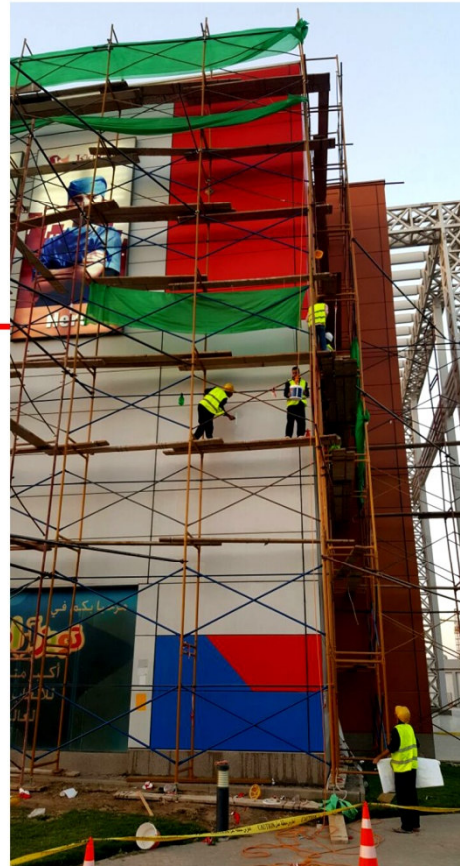
- *Expensive process.*
- *Very time consuming process.*
- *Won't get the color needed.*
- *Colors wouldn't be consistent nor bright and vivid.*



# Highlighted Projects

Homeworks Egypt

## Our Solution



### Usage of

PS-506

PS-912

PS-910

PS-954

PS-959

Our solution consisted of using the already existing panels and wrapping it by the color approved by our Client.