

# Highlighted Projects

**Al-Barsha, Dubai**

## Marriot Courtyard Hotel

A group of projects ranging between bedroom interior elements, and architectural design elements .



# Highlighted Projects

Marriot Hotel Dubai

## Original plan

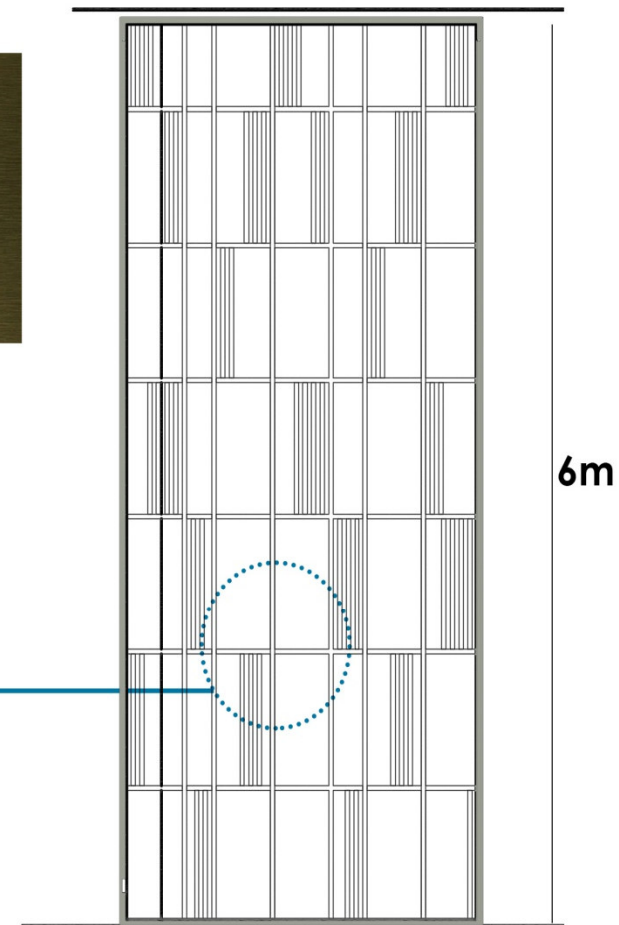
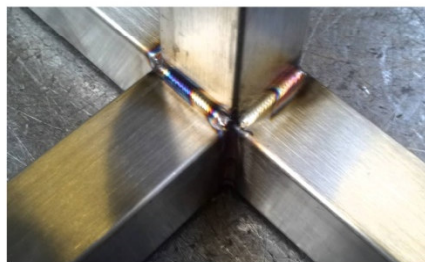
The original plan consisted of welded stainless steel sections.

Chemically treated to give the bronze color wanted, using immersion technique.

**Estimated cost AED 1million**

### Negatives

- Stainless steel is an expensive material.
- Extremely expensive process in order to reach the color needed.
- Welding doesn't give a neat finish.
- Immersion technique for coloring would not give consistent color throughout the section, since the tank can only take in a 3m long bar, while the needed bar is 6m long.



# Highlighted Projects

Marriot Hotel Dubai

## Our Solution

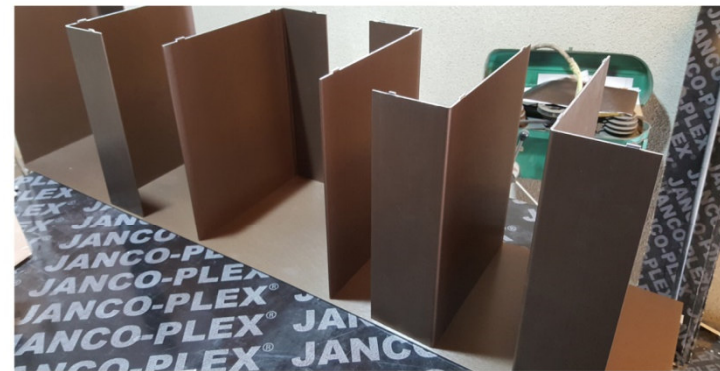
Started with covering the aluminum sections with Dinoc ME-1223 and Dinoc ME-1225 for the bookshelves unit.

### Rolls Used

ME-1223 14  
ME-1225 2



Dinoc ME-1223



Dinoc ME-1255



# Highlighted Projects

Marriot Hotel Dubai

## *Our Solution*

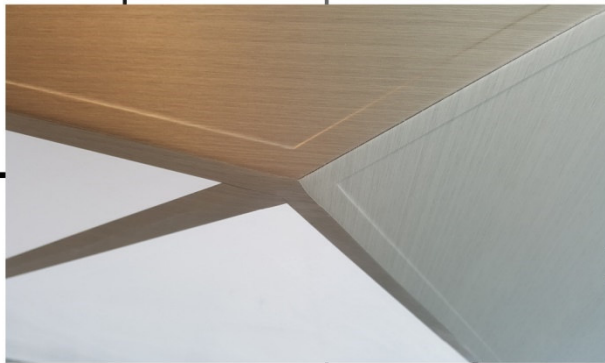


First there was an aluminum skeleton installed on the wall then the wrapped frame work was fixed on top of it using 3M VHB Tape.

# Highlighted Projects

Marriot Hotel Dubai

Counters





# Highlighted Projects

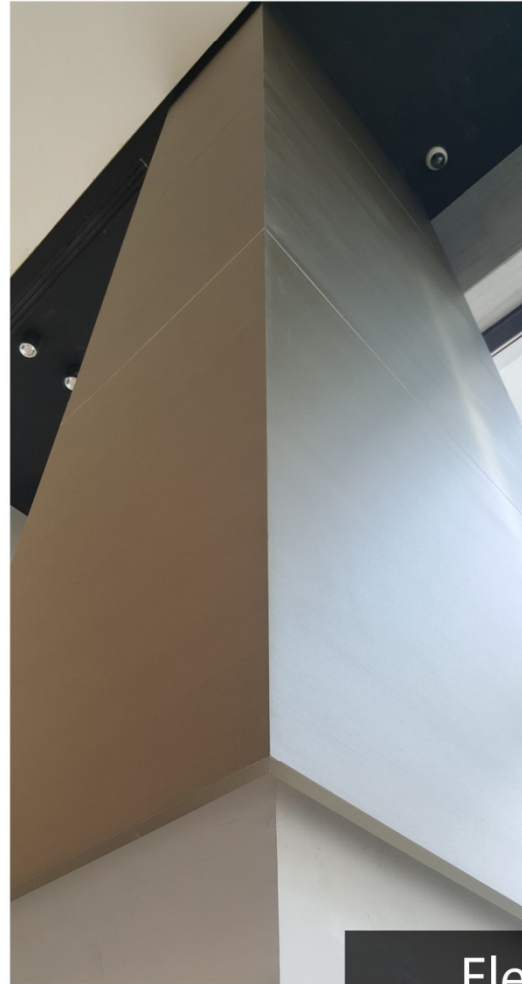
Marriot Hotel Dubai

Marble Wall



# Highlighted Projects

Marriot Hotel Dubai



Elevators and column casings



# Highlighted Projects

Marriot Hotel Dubai

